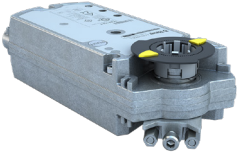
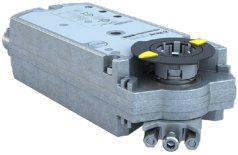


Non-Spring Return Commercial Actuators - DC-310 Series



Technical Specifications - DC24-310 Series Actuator				
Type	Actuator Models	DC24-310-T(-A)	DCM24-310-T(-A)	
			Non-Spring Return - Floating, Time Out Features with optional Auxillary Switches (-A)	Non-Spring Return - Modulating with optional Auxillary Switches (-A)
Electrical	Torque	310 lb-in. (35 Nm)		
	Operating Voltage	24 VAC ±20% at 50/60 Hz		
	Power Consumption	7 VA, 7W	8 VA, 8W	
	Control Signal	N/A	0 to 10 VDC	
	Control Impedance	N/A	100k Ohm	
	Input Signal	N/A	Y (wires 8-2) DC 0...10 V (Max. permissible input voltage DC 35 V)	
	Feedback	Contact Bray	0 to 10 VDC	
	Positioning Signal	N/A	DC 0...35 V at Offset U _o = 0...5 V and Span ΔU = 2...30 V	
	Feedback Signal	N/A	DC 0 to 10 VDC	
	Dual Auxillary Switch	Standard Cable - AC, 6 A Resistive, AC 2 A General Purpose		
	Voltage	Standard Cable - 24 to 250 VAC		
	Switch Range	Switch A - 0 to 90° with 5° Intervals (Recommended Range Usage 0 to 45°) Factory Setting 5° Switch B - 0 to 90° with 5° Intervals (Recommended Range Usage 45 to 90°) Factory Setting 85°		
	Stall Protection	Yes		
	Operation	Electrical Connection	3 ft. (0.9 m) Pre-cabled - AWG 18	
Equipment Rating		Class 2 According to UL, CSA - Class III per EN60730		
Manual Override		External Push Button		
Runtime for 90° of Rotation		90 seconds, constant for all operating conditions		
Rotation Timing		150 sec. at 50 Hz (125 sec. at 60Hz)		
Rotation Range		Nominal Angle of Rotation 90°, mechanically limited to 95° ± 2°		
Cycle Life		Designed for 60,000 full stroke cycles		
Mechanical Connections		Round Shafts - 3/8 to 1 in. (9.5 to 25.4 mm) diameter Square Shafts - 1/4 to 5/8 in. (6 to 18 mm) Minimum Shaft Length - 3/4 (20 mm)		
Enclosure		IP54 as per EN 60 529		
Ambient Conditions (Non-Condensing)		Operating — -25 to 130°F (-32 to 55°C); 0 to 95% RH, non-condensing Storage — -40 to 158°F (-40 to 70°C); 0 to 95% RH, non-condensing		
Audible Noise Rating		<45 dBA at 1 m		
Dimensions		(L) 11.8 x (W) 3.9 x (H) 2.9 in. (300 x 100 x 67.5 mm)		
Weight		4.4 lb (2 kg)		
Conditions		Agency Certifications	UL listed to UL873-cUL certified to Canadian Standard C22.2 No. 24-93 CE conformity: Electromagnetic compatibility 2004/108/EC-Low-voltage directive 2006/95/EC	
	Warranty	5 Years limited from time of shipment.		

Non-Spring Return Commercial Actuators - DC-310 Series Wiring



KEY

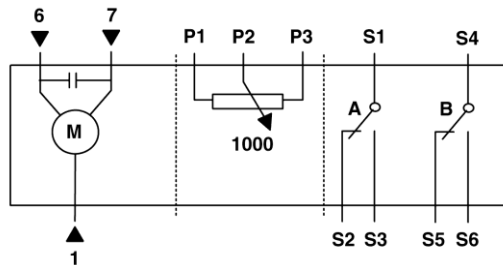
Cable			Function
No.	Code	Color	
1	G	Red (RD)	AC 24 V Supply (SP)
2	G0	Black (BK)	Neutral (SN)
6	Y1	Violet (VT)	Control Signal Clockwise
7	Y2	Orange (OG)	Control Signal Counterclockwise
8	Y	Gray (GY)	0 to 10 VDC Input Signal
9	U	Pink (PK)	Output for 0 to 10 VDC Position Indication
P1	a	White/Red (WH RD)	Feedback 0 to 100% P1 - P2
P2	b	White/Blue (WH BU)	Feedback Common
P3	c	White/Pink (WH PK)	Feedback 100 to 0% P3 - P2

Auxiliary Switch - Factory Installed			
S1	Q11	Gray/Red (GY RD)	Switch A Common
S2	Q12	Gray/Blue (GY BU)	Switch A - N.C.
S3	Q14	Gray/Pink (GY PK)	Switch A - N.O.
S4	Q21	Black/Red (BK RD)	Switch B Common
S5	Q22	Black/Blue (BK BU)	Switch B - N.C.
S6	Q24	Black/Pink (BK PK)	Switch B - N.O.

DC24-310-T(-A)

STANDARD CABLE

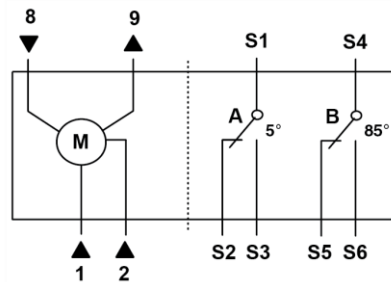
Floating Control



DCM24-310-T(-A)

STANDARD CABLE

Modulating Control



Warning - These actuators are designed for use only in conjunction with operating controls. Where an operating control failure would result in personal injury and/or loss of property, it is the responsibility of the installer to add safety devices or alarm systems that protect against, and/or warn of, control failure.

To avoid excessive wear or drive time on the motor, use a controller and/or software that provides a time-out function to remove the signal at the end of rotation (stall).

Disclaimer - The performance specifications are nominal and conform to acceptable industry standards. For application at conditions beyond these specifications, consult the nearest Bray office. Bray controls shall not be liable for damages resulting from misapplication or misuse of its products.